

# **KLEE** *pump VP*

Drainage and Vortex Pump



*Danish Design* 

**KLEE Engineering Ltd.**  
10F, No. 66, sec. 1, Neihu Rd., Neihu Dist.  
Taipei City, 114-93, Taiwan

Phone: +886 2 66 03 88 21  
Fax: +886 2 66 03 88 99  
info@klee.com.tw - www.klee.com.tw

# KLEEpump VP



The KLEE Vortex Pump is a versatile and reliable, high quality drainage and dewatering pump.

It's large impeller allows for extreme flow and passage, which means this pump has a wide application and usage value.

## Applications:

- Light-duty wastewater,
- Drainage for parking garages or other buildings,
- Drainage of surface water,
- Drainage of groundwater,



Size 0.4 – 1.5kw comes with automatic float switch

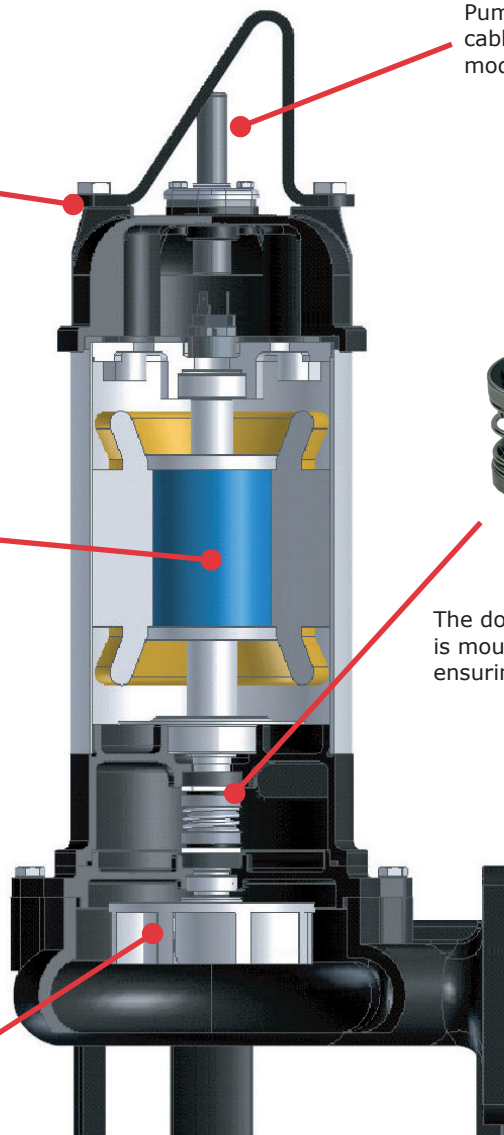
High-efficiency motor with thermal protection that safeguards against improper operation, and results in extended life.

Pump comes with a 10 m robust cable with plug on the 1-phase models.

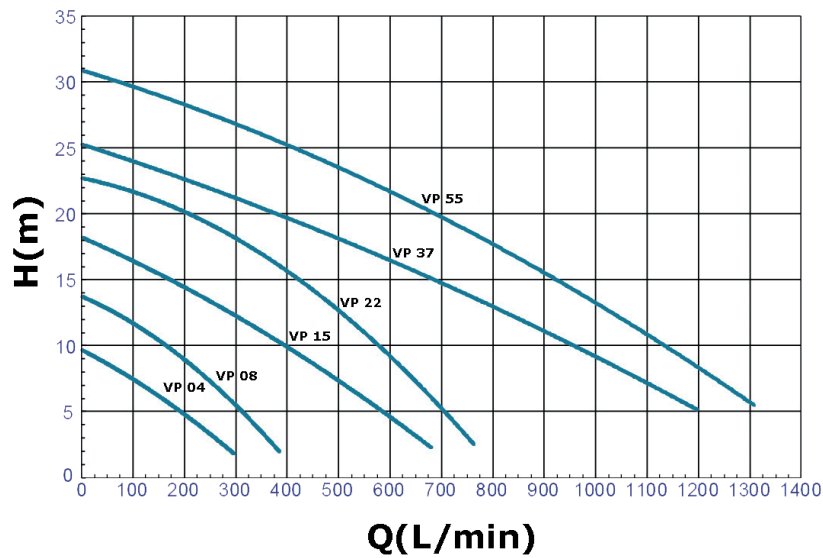


The double mechanical shaft seal is mounted in the oil chamber, ensuring constant lubrication.

A durable Vortex Impeller with minimum wear even when abrasive materials are involved.

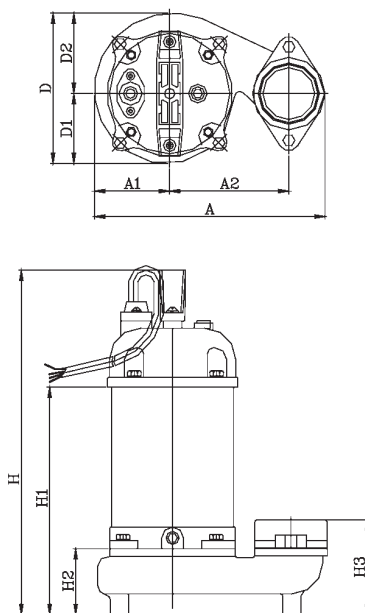


## Curve:

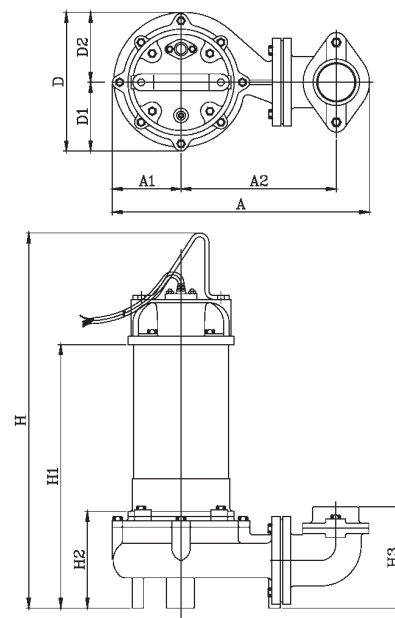


## Drawing:

0,3-1,5 kW



2,2-5,5 kW



## Technical data:

Output "	Model	Version	Effect		Dimension (mm)							Weight Kg	
			kW	V	A	A1	A2	D	H	H1	H2		H3
2"	VP-50-04	S/SA/T	0,4	230/400	222	73	115	145	410	297	113	133	13
	VP-50-08	S/SA/T	0,75	230/400	222	73	115	149	464	340	113	133	18
	VP-50-15	S/SA/T	1,5	230/400	316	103	163	208	548	398	120	152	33
3"	VP-80-15	T	1,5	400	316	103	163	208	548	398	120	152	33
	VP-80-22	T	2,2	400	387	103	234	208	568	420	122	153	34
	VP-80-37	T	3,7	400	459	110	256	227	633	468	160	220	56
	VP-80-55	T	5,5	400	459	110	256	227	673	508	160	220	62

S= 1 phase

SA= 1 phase with automation

T= 3 phase

## **Pump overview:**

Brd. Klee has a wide range of submersible pumps. For example, the KLEE CP sewage pump with cutting ability and wastewater pumps.

KLEE VP Vortex Sewage pump with outputs from 0.5 to 5,5kW and provide 32m head and flow up to 1150LPM.

KLEE also offers Cutter Pumps with highly efficient blade systems with outputs from 0.5 to 5,5kW.

All product lines from size 0.4 - 1.5kw are available with auto float switch.

KLEE Pumps has a series of quality pumps for many purposes. The Blue KLEE Pump KSP is an effective, high quality pump that can be used in construction and dewatering settings.

It is resistant to sand, mud and gravel.

It is available with low suction and can pump down to 3 mm.



KLEEPumpe EP-Series   KLEEPumpe VP-Series   KLEEPumpe CP-Series   KLEEPumpe AP-Series

## **KLEE pump KSP**

KLEEpump has a series of quality pumps for many purposes. The Blue KLEEpump KSP is an effective, high quality pump that can be used in construction and dewatering settings.

It is resistant to sand and gravel.

It is available with low suction and can pump down to 3 mm.

